

"It is much more difficult to judge oneself
than to judge others"

Antoine de Saint-Exupery

Sunnyfield
independence



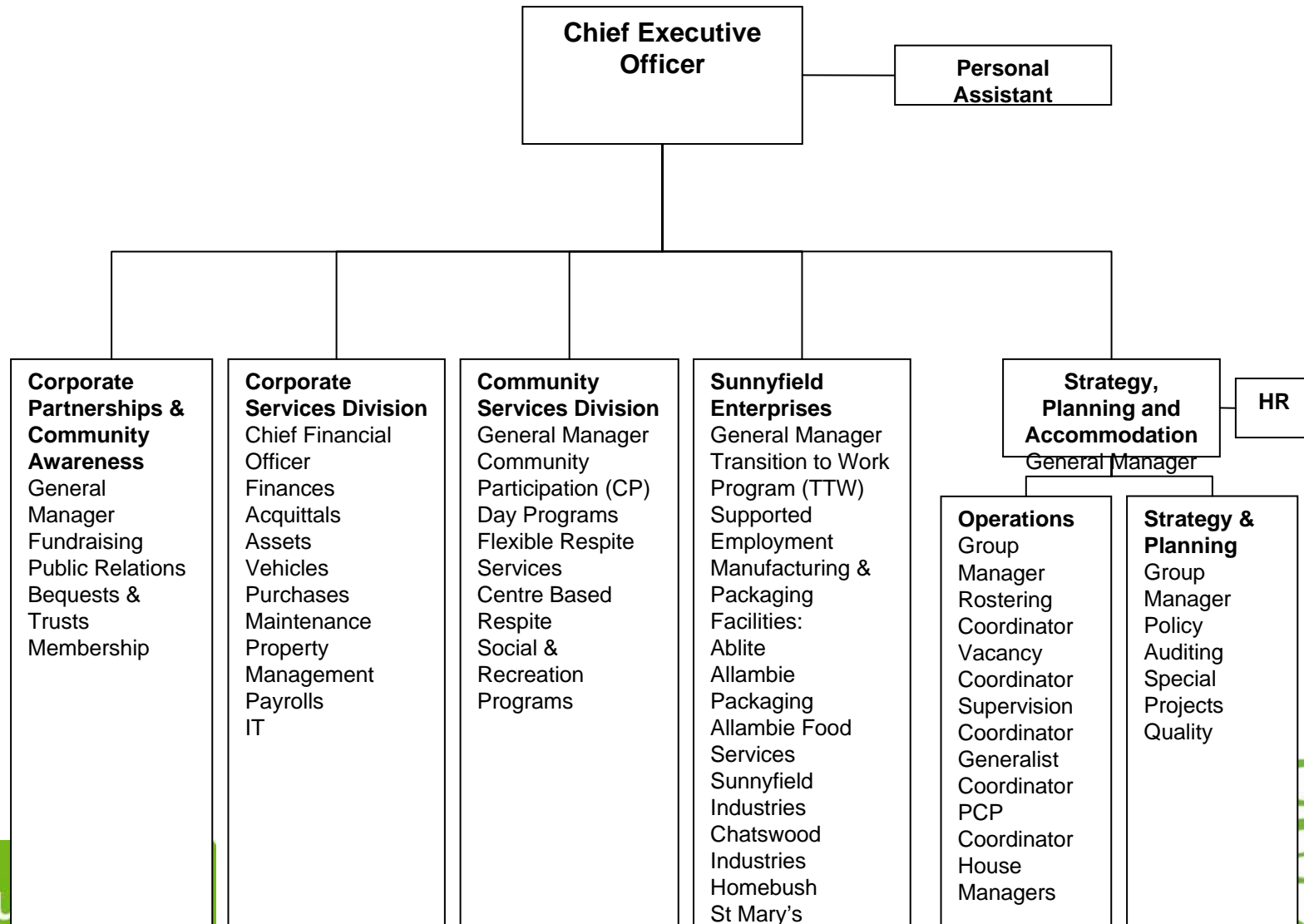


Tim surfed the web for the first time today. He is now e-Independent.
Sunnyfield Snapshot #401

Sunnyfield
independence
www.sunnyfield.com.au



Sunnyfield Organisational Chart



DOP offers:

- life skills programs
- dance, drama and art classes
- gardening
- literacy programs
- music therapy
- massage therapy
- hobbies and
- volunteering

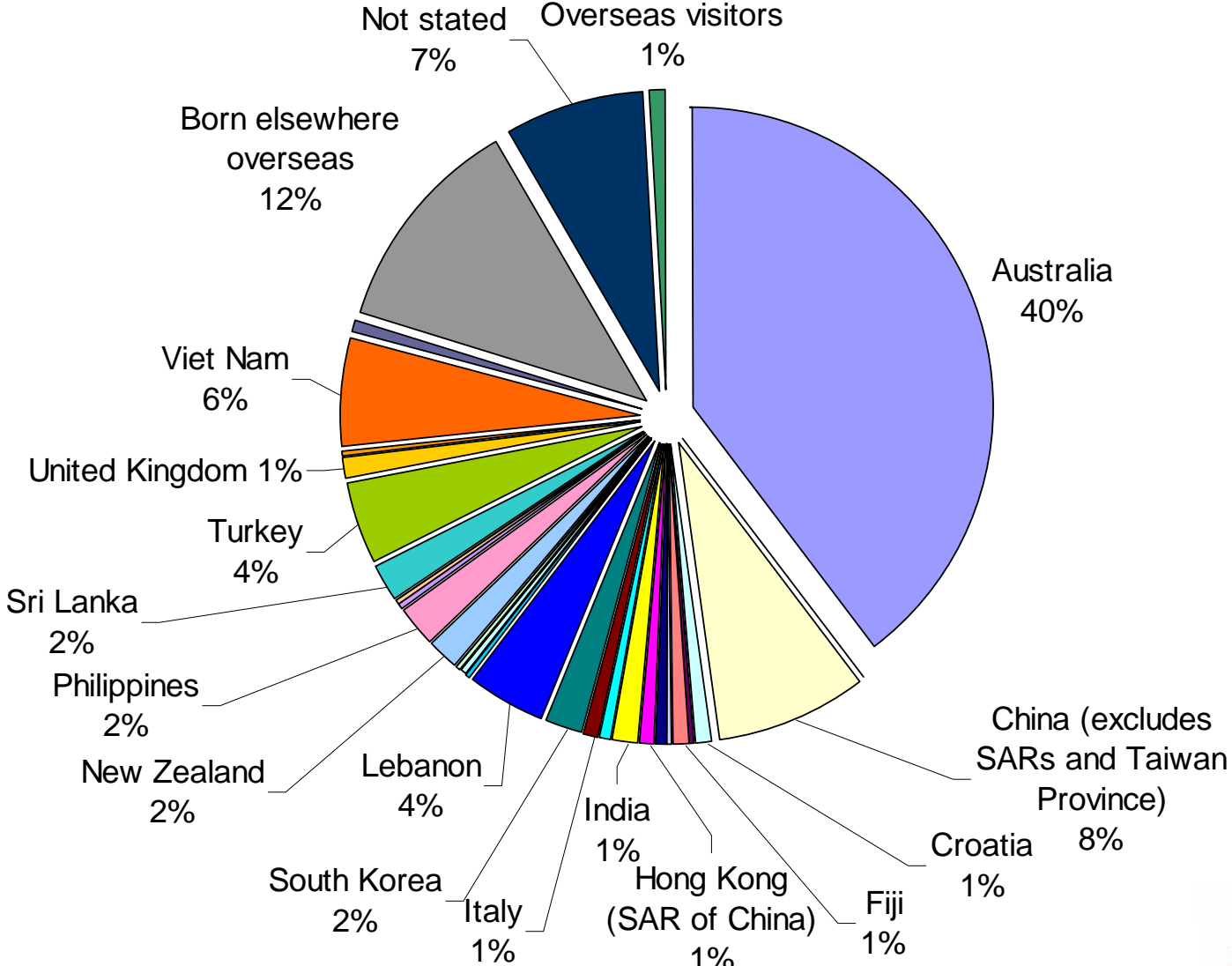


05/09/2006





Country of Birth – Auburn LGA





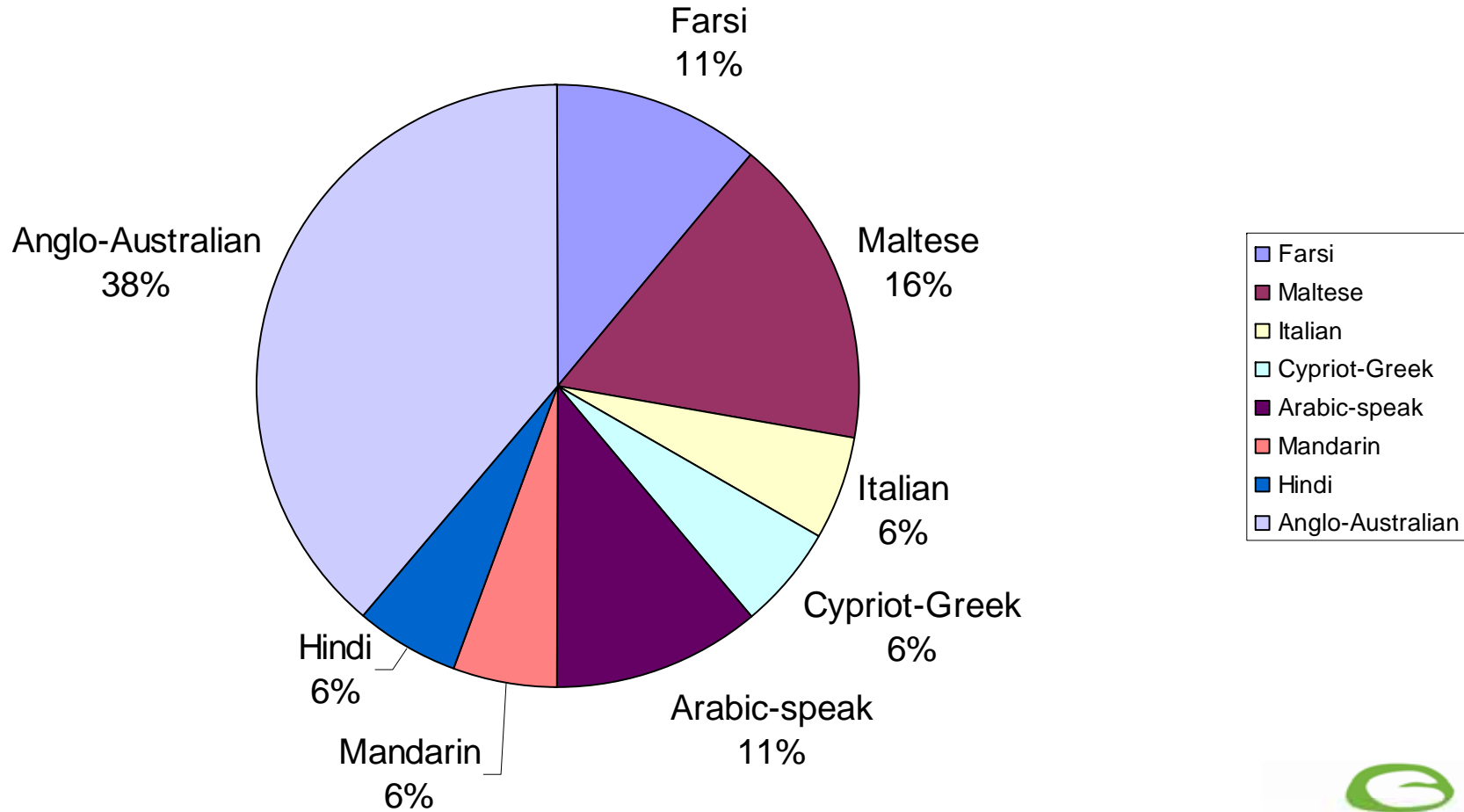


Sunnyfield
independence



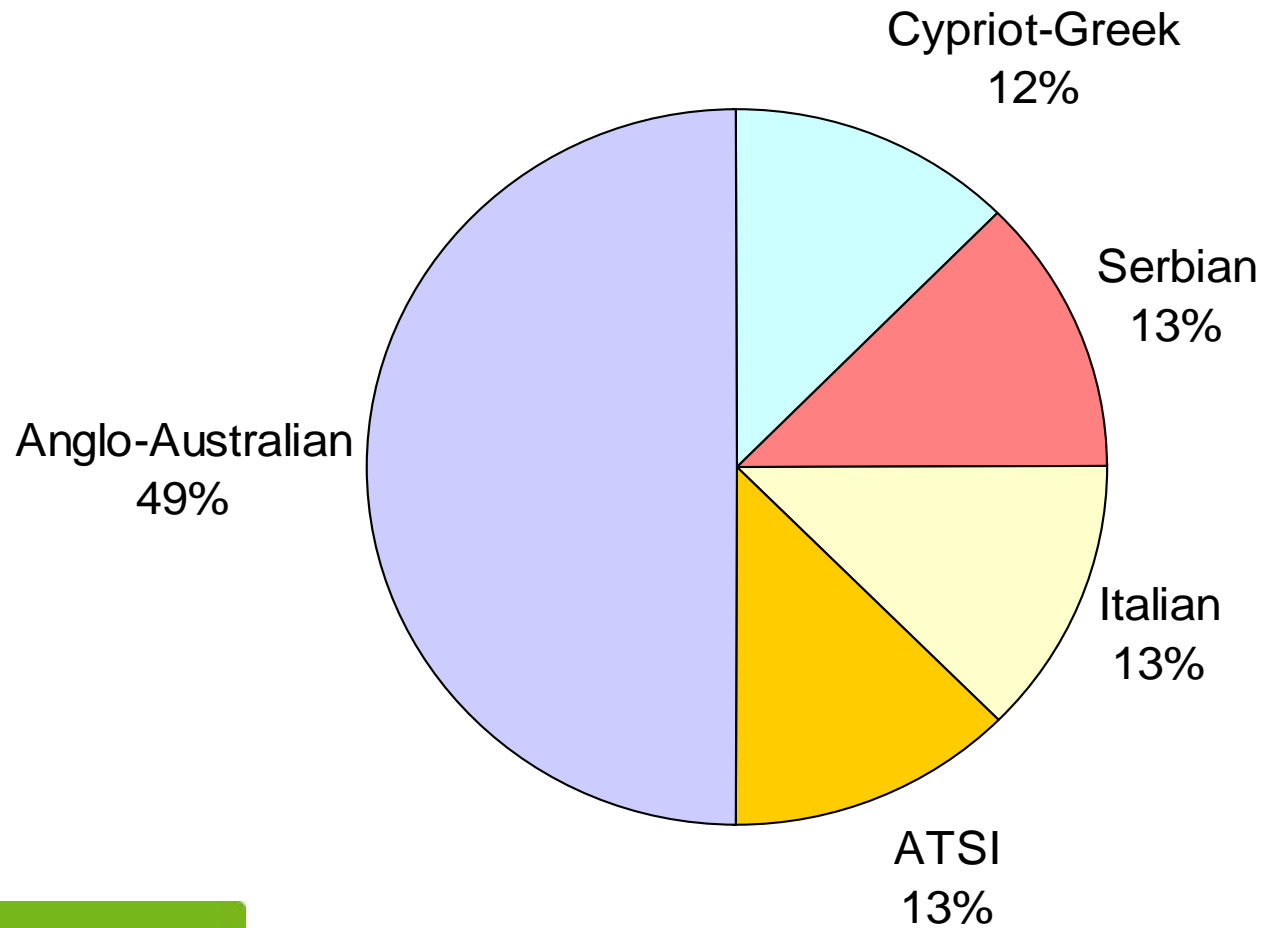
Sunnyfield Day Options

Service Users by Cultural Background



Sunnyfield Day Options

Staff by Cultural Background



- The Multicultural Disability Advocacy Association of NSW (MDAA) is the peak body for people from a non-English speaking background (NESB) with disability, their families and carers in NSW



Sunnyfield
independence



MDAA Community Consultation, Griffith NSW



About MDAA ...



Partnership Agreement outlined:

- proposed outcomes
- program areas and activities
- timeframes and
- roles and responsibilities of the project partners



Partnership focus

- Support in establishing a Consumer Advisory Committee
- Reviewing assessment processes
- Supporting staff to increase their skills and knowledge in working with people from NESB
- Encouraging staff to explore issues of concern regarding working with people from NESB with disability

Workshops:

- History of Immigration Policies
- Introduction to Access and Equity
- Networking with non- English speaking backgrounds communities
- Anti-Discrimination legislation
- Working effectively with Interpreters, and
- Introduction to Cultural Competency

Some of the Outcomes from the partnership:

- :Building cultural competence into the Day Options business plan
- Developing Business Plan goals that ensure we reflect cultural competence in recruitment processes
- Inviting guest speakers from CALD backgrounds to our Cultural Connections sessions
- Our program planning now incorporates and celebrates cultural identity
- Staff language and behaviour are now more appropriate
- Staff feel more confident to speak up when confronted with negative language and stereotypes
- A workplace environment where assumptions, stereotypes and negative attitudes about diversity are not tolerated
- Links to resources are available to staff and the people we support
- Staff members who speak another language feel more comfortable to use their language skills to assist people we support and their families
- Continuing learning and reviewing work practices